



# Aids and Adaptations for Your Home

## When will work be completed?

**Small/Miscellaneous** work adaptations are generally carried out by the Association's maintenance contractors within a four week period.

**Minor** work adaptations are passed to our Surveyor to carry out a detailed design and to tender the work. We aim to complete these adaptations within 12 weeks of receipt of an assessment.

**Major** work adaptations are passed to our Surveyor to carry out a detailed design, seek planning permission or building control approval and tender the work. We aim to complete these adaptations within 24 weeks of receipt of an assessment.

## Do I have to pay for the adaptation?

Generally no, the Association works closely with the Department for Social Development and the Northern Ireland Housing Executive which provide grants for approved aids and adaptations, for people with disabilities who live in a property belonging to the Association. Where adaptations are not grant funded the Association may fund the adaptation directly.

## Contact us

For all your aid and adaptation enquiries



### In Writing

**Adaption Co-ordinator  
Oaklee Housing Association  
Freepost BEL 2371  
Belfast BT1 6BR  
(NO STAMP REQUIRED)**



### By Telephone

**0845 073 0005 (lo-call rate)**



### By Textphone

**18001 0845 073 0005**



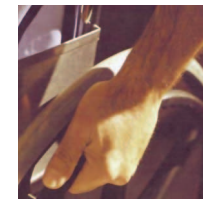
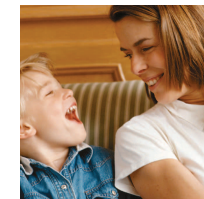
### By Email

**servicescentre@oaklee.org.uk**



### Online

**www.oaklee.org.uk**



For all enquiries contact the  
**Oaklee Services Centre**

**0845 073 0005**

*(lo-call rate)*

# Aids and Adaptations for Your Home

Oaklee works closely with the Department for Social Development and the Northern Ireland Housing Executive to provide aids and adaptations for people with sensory impairments or disabilities living in our accommodation.

This service can offer those tenants a measure of independence and have a positive effect on their well-being. We believe we can improve the quality of life for people by enabling them to live independently.

To live safely and comfortably at home, it is important that you can move around easily.

If you are having difficulties carrying out normal day-to-day living activities, an aid or adaptation could help.

You can receive certain aids and adaptations following a recommendation from an Occupational Therapist, Social Worker (for sensory impairments only), or your Maintenance Officer.

## What is classed as an aid or adaptation?

Recommendations are divided into three categories. For example:

**Small/Miscellaneous** ~ Grab/hand or stair rails, toilet frames, shower seats, alarm strobe light, vibrating pillows, door entry systems, etc.

**Minor** ~ Shower to replace bath, external ramps and steps, parking bays, stair lifts, etc.

**Major** ~ Ground floor extensions, through floor lifts, en-suite bathrooms, etc.

## How do I apply for an adaptation?

You should contact your GP and explain the difficulties you are experiencing, they will refer you to an Occupational Therapist at your local Health Trust or to a Social Worker.

The Occupational Therapist/Social Worker will assess your difficulties and make recommendations to the Association explaining the aids or adaptations you require.

For small adaptations you can contact your Maintenance Officer through the Oaklee Services Centre **0845 073 0005**.

If you live in the North or West Belfast area you can contact the Occupational Therapist Call Centre on **08456 066596**.

## What is not classed as an aid or adaptation?

Items which are not linked to the property, for example: wheelchairs, walking sticks, hearing aids, etc.

Although the Association does not provide these items, you may be able to obtain them through your GP, hospital or other health services.

## What if my home cannot be adapted?

In some cases due to the layout, age or structure of your home, it may not be possible to adapt your property. Your Maintenance Officer can advise on the possibility of alternative works or your Housing Officer in applying for a transfer to another property.

